

\*\*\* PREMIER STD on Friday and Saturday\*\*\*  
\*\*\* PREMIER JWW on Friday and Sunday\*\*\*  
\*\* PREMIER IS OPEN TO ALL LEVELS\*\*  
\*\*FAST ON Saturday-All levels will walk  
together\*\*  
\*\*T2B ON SUNDAY\*\*

PLEASE BE SURE TO READ THE  
INFORMATION REGARDING COVID-19  
PAGE FOR RULES THAT WILL BE IN PLACE  
AT THIS TRIAL.

By entering/attending this trial you are  
consenting that you understand there is an  
inherent risk of exposure to COVID-19.  
COVID-19 exists in any public place where  
people are present. COVID-19 is an extremely  
contagious disease that can lead to severe  
illness and in some cases death. By  
entering/attending this trial, you voluntarily  
assume all risks related to exposure to  
COVID-19 and agree that NWAAG, the AKC,  
and the University of Arkansas are not liable  
for any exposure/risk associated with  
COVID-19.

## NORTHWEST ARKANSAS AGILITY GROUP

Licensed by the American Kennel Club



### Three All Breed Agility Trials

Friday, March 12, 2021 Event #2021712304

(Premier STD, Premier JWW, All JWW/STD Classes Limit 310/60  
Handler Limit)

Saturday, March 13, 2021 Event #2021712305

(All FAST Classes, Premier STD, All JWW/STD Classes/Limit 310/60  
Handler Limit)

Sunday, March 14, 2021 Event #2021712306

(T2B, Premier JWW, All JWW/STD Classes / Limit 310/60 Handler  
Limit)

**FEO will be offered in T2B & FAST.**

\*\*\*Electronic Timers will be used\*\*\*

University of Arkansas-Pauline Whitaker Animal Science Arena

1335 W. Knapp Dr, Fayetteville, AR 72704

Indoor - Packed Dirt Floor Arena / 2 Rings - 90 X 94

Friday, Saturday, and Sunday: 7:00 AM to 30 minutes after last dog of day.

**Entries Accepted on "First Received" Basis**

**on or after 8:00 AM January 26, 2021**

(A Maximum of 10 Entries Only per envelope will be accepted)

**ACCEPTING ONLINE ENTRIES THROUGH [LabTestedOnline.com](https://www.labtestedonline.com)**

**ENTRIES CLOSE: February 26, 2021 at 5:00pm**

**or when entry limits have been reached, after which time entries cannot be  
accepted, canceled, altered, or substituted except as provided for in  
Chapter 11 Section 6 of the Dog Show Rules.**



Certification Permission is granted by the American Kennel Club for the holding of this  
event under American Kennel Club rules and regulations.

Gina DiNardo, Secretary

## AGILITY TRIAL COMMITTEE

Trial Chair: Erin Johnson  
16806 E. Hwy 412, Springdale, AR 72764

Phone: (479) 466-8702

Trial Secretary: Stephanie Langston  
603 SE Yale, Bentonville, AR 72712

Phone: (479) 381-3114

E-Mail: [nwaagsec@gmail.com](mailto:nwaagsec@gmail.com)

EVENT COMMITTEE: Susan Jones, Janice Johnson, John Gooldy, and Jeri Thorpe

### NORTHWEST ARKANSAS AGILITY GROUP

President: Stephanie Langston, 603 SE Yale, Bentonville, AR 72712,

Vice President: Susan Jones, Secretary & Treasurer: Jeri Thorpe 3975 W. Finger Road, Fayetteville, AR 72701

### Entry Fees:

First entry of each dog, per day: \$25.00  
(Includes \$3.50 AKC recording fee)

Each additional entry of same dog per day: \$14.00  
(Includes \$3.00 Additional AKC recording fee)

### Make checks payable to "NWAAG"

During the first 48 hours after opening, the initial limit of entries designated will be: Online 70 runs and Paper 240 runs. If either form of entry has not filled at the end of the 48-hour time period, the club reserves the right to decrease or increase either one accordingly. Please note this trial is also limited by handlers with 60 handlers per a day.

### Move Ups:

Move ups will be allowed prior to the start of this trial until 6:00 PM of Monday, March 8, 2021. Mail and E-mail changes will be accepted. Day to day move ups will also be accepted. Forms will be available on site and must be completed and submitted to the Trial Secretary no later than 30 minutes following the close of competition on Friday and Saturday.

E-mail move-ups to [nwaagsec@gmail.com](mailto:nwaagsec@gmail.com)

**After close wait list:** A waiting list (30 runs per trial) will be maintained for these trials once they have closed on Friday, February 26, 2021. The waiting list will be active until its deadline - Monday, March 8, 2021 at 6:00 PM. Any dogs that aren't entered in these trials at closing and pulled before the waiting list deadline will be replaced; if possible, by dogs in order on the waiting list, and the exhibitor will be reimbursed in full. If a dog is pulled but cannot be replaced, the exhibitor will not receive a refund and the dog will be considered absent for the trials. Entry fees for dogs on the waiting list that do not get into the trial by the waiting list closing date will be refunded in full.

### Judge for all classes

**Pam Johnson # 96667**

11674 RIDGELY RD. RIDGELY, MD 21660

## VOLUNTEER SIGN-UP SHEET

### PLEASE VOLUNTEER TO HELP OUT AT OUR TRIAL!

We want to keep things running smoothly so everyone enjoys this trial. To do this, we are welcoming help from exhibitors. We appreciate any help, experienced or not. We will make sure that your duties do not interfere with running your dog.

To volunteer to help, please fill out the form below and return it with your entry to: NWAAG Agility Trial Secretary, 603 SE Yale, Bentonville, AR 72712. A workers link will be posted closer to the trial.

I am willing to help at the NWAAG Agility Trial in the following areas:

Check	Job	Day(s) Available		
		Friday	Saturday	Sunday
	Timer	Friday	Saturday	Sunday
	Scribe	Friday	Saturday	Sunday
	Gate Steward	Friday	Saturday	Sunday
	Course Builder	Friday	Saturday	Sunday
	Ring Crew	Friday	Saturday	Sunday
	Scribe Runner	Friday	Saturday	Sunday
	Leash Runner	Friday	Saturday	Sunday
	Bar Setter	Friday	Saturday	Sunday

I am showing in the following classes:

Level	Jump Height	Friday		Saturday		Sunday	
		STD	JWW	STD	JWW	STD	JWW
Novice							
Open							
Excellent							
Premier STD							
Premier JWW							
T2B							
FAST Mas/Exc							
FAST Open/Novice							

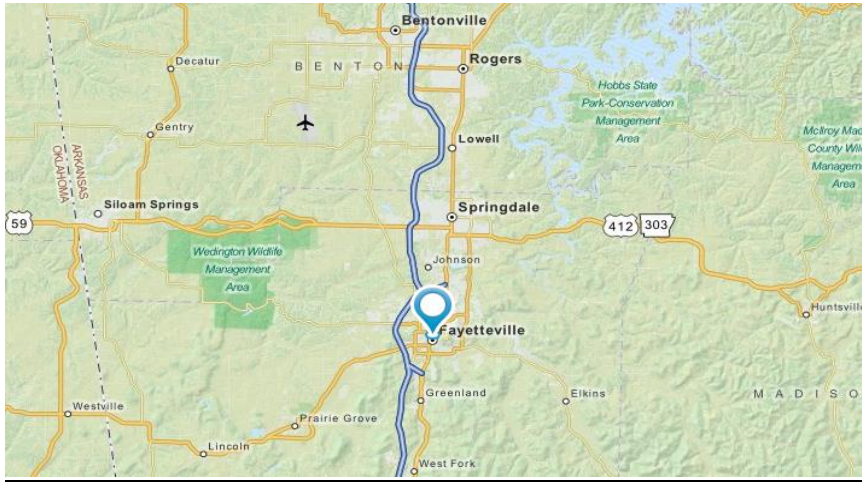
While we will do our best to accommodate your choice of jobs, please understand that we can give no guarantees. Training will be provided for those who are inexperienced at their assigned jobs.

NAME: \_\_\_\_\_

PHONE NUMBER: \_\_\_\_\_

E-MAIL: \_\_\_\_\_

## MAP & DIRECTIONS



### Directions to Show Site

From I- 49 take exit 67A and head south onto HWY 112. It is less than a mile from the exit, situated on the west side of HWY 112.

## CHECK IN - HEIGHT CARDS

**EFFECTIVE January 1, 2010** When filling out the entry form, there is a new section at the top of the form for exhibitors to designate whether your dog has a valid jump height card or if your dog needs to be measured. Please check the appropriate box so that the Trial Secretary knows whether to include your dog on the *Dogs To Be Measured List*. **It is no longer required that you submit a copy of your dog's jump height card with your entry form or show it during day of show check-in.**

### Schedule:

Friday and Saturday the Judge's briefing prior to judging starts at 7:35 AM. Sunday Judge's briefing prior to judging starts at 7:10 AM. Building will open at 7:00 AM, Friday, Saturday, and Sunday.

### Food:

**Food and drinks will not be available at this trial so please come prepared and bring your own food and drinks. There are several fast food places nearby.**

## Running Order

FRIDAY-8:00 AM	SATURDAY-8:00 AM	SUNDAY-8:00 AM
Limited to 310 Runs	Limited to 310 Runs	Limited to 310 Runs
24C", 24", 20", 16", 12", 8", 4"	4", 8", 12, 16", 20", 24", 24C"	24C", 24", 20", 16", 12", 8", 4"
Premier STD Preferred Premier STD Premier JWW Preferred Premier JWW Excellent/Masters STD Preferred Exc/Mas STD Excellent/Masters JWW Preferred Exc/Mas JWW Open STD Preferred Open STD Open JWW Preferred Open JWW Novice A/B STD Preferred Nov. STD Novice A/B JWW Preferred Nov. JWW	Excellent/Master FAST Open FAST Novice FAST Premier STD Excellent/Masters JWW Preferred Exc/Mas JWW Premier STD Preferred Premier STD Open JWW Preferred Open JWW Excellent/Masters STD Preferred Exc/Mas STD Open STD Preferred Open STD Novice A/B JWW Preferred Nov. JWW Novice A/B STD Preferred Nov. STD	Time to Beat (T2B) Preferred T2B Premier JWW Preferred Premier JWW Excellent/Masters STD Preferred Exc/Mas STD Excellent/Masters JWW Preferred Exc/Mas JWW Open STD Preferred Open STD Open JWW Preferred Open JWW Novice A/B STD Preferred Nov. STD Novice A/B JWW Preferred Nov. JWW

### NOTE:

Exact running order will be determined once entries close and will be provided in the Judging Program. **NOTE THIS RUNNING ORDER COULD CHANGE.**

The Preferred Classes will be run concurrently with the Regular Classes using the same course as the Regular Classes to minimize exhibitor walkthroughs, judge's briefings, and jump height changes.

Single copies of the latest editions of the "Rules Applying to Dog Shows" and "Obedience Regulation" and "Regulations for Agility Trials" may be obtained without charge from the American Kennel Club, 5580 Centerview Drive, Raleigh, NC 27606-3390

### Preferred Classes

The Preferred Classes are open to any dog eligible to enter an agility trial as defined in Chapter 1, Section 3. The same Regulations apply for Divisions A and B as those described for the regular titling classes.

The owner may choose to enter the Preferred Standard Agility Class and Preferred Jumpers With Weaves Class in lieu of entering the Regular Standard Agility Class and the Regular Jumpers With Weaves Class at any trial. If an owner wishes to enter a different height, they must send a different entry form for each height. You may only enter one lass at one height each trial day.

All dogs entering the Preferred Classes for the first time **MUST** enter at the Novice level, except when utilizing the one-time crossover allowance.

### **Veterinarian-ON CALL**

Davis Animal Hospital, 479-751-2525  
1430 Carley Road, Springdale, AR 72762  
(Map available at Trial Site)

### **TRAVEL & LODGING INFORMATION**

Please make sure that you pick up after your dogs so that these hotels will continue to accept dogs. Some restrictions may apply. Check with hotels regarding rates and dog policy when making reservations.

<b>La Quinta Inn, Fayetteville</b> 720 E. Millsap Road, Fayetteville, AR (479) 587-8600 \$129 Mention NWAAG Dog Show. Must book by February 25, 2021 No Pet Fees 5.0 miles from Show Site	<b>HOME 2 Suites by Hilton</b> 1519 S. 48th Street, Springdale. AR 479-756-1260  7.9 miles from Site
Hampton Inn and Suites 1700 S. 48th Street, Springdale, AR 72762 (479) 756-3500 7.9 miles from Show Site	
<b>RV Parking at Washington County Fairgrounds</b> There will be a gun show going on at the same time. <b>Contact Stephanie Langston at <a href="mailto:nwaagsec@gmail.com">nwaagsec@gmail.com</a> to reserve and send pre-payment to NWAAG, 603 SE Yale, Bentonville, AR 72712 Must contact by February 26, 2021</b> \$25 a night if pre-paid by February 26, 2021 and then will be \$30 a night thereafter Approximately .5 miles from show site There will also be limited spots for 100% dry camping at the arena. Cost is \$20 a night. Please contact Stephanie Langston at <a href="mailto:nwaagsec@gmail.com">nwaagsec@gmail.com</a> . Another camping option is <b>Southgate RV Park, 2331 S. School Ave, Fayetteville</b> 479-442-2021 <a href="https://www.southgatervpark.com/">https://www.southgatervpark.com/</a> Approx 12 minutes from site	

All owners/exhibitors should be aware that the entire motel and grounds are considered within the trial limits. You will be responsible for all damage to your room and may be subject to disciplinary action in accordance with the rules of the AKC. Any abuse of the motel/adjoining grounds will be brought to the attention of the show-giving club and it's

Trial Committee. Any exhibitor's entries may be refused for previous misuse of the motel facilities. This is an AKC supported measure.

### **Prizes and Awards:**

Ribbons will be awarded to 1st through 4th place in each jump height in each class. A qualifying ribbon will be awarded to all dogs receiving qualifying scores. Dogs must qualify to receive a placement ribbon. New Title prizes, Double Q ribbons, and MACH Ribbons will also be available.

AKC Rules, Regulations, Policies and Guidelines are available on the American Kennel Club Website, [www.akc.org](http://www.akc.org)

### **AGILITY HEIGHT DIVISIONS**

#### **Height Divisions Regular Classes:**

- 8 Inches: For dogs 11 inches and under at the withers
- 12 Inches: For dogs 14 inches and under at the withers
- 16 Inches: For dogs 18 inches and under at the withers
- 20 Inches: For dogs 22 inches and under at the withers
- 24 Inches: For dogs over 22 inches at the withers
- 24CInches: For dogs choosing to jump 24 inches but are not over 22 inches at the withers.

#### **Height Divisions Preferred Classes:**

- 4 Inches: For dogs 11 inches and under at the withers
- 8 Inches: For dogs 14 inches and under at the withers
- 12 Inches: For dogs 18 inches and under at the withers
- 16 Inches: For dogs 22 inches and under at the withers
- 20 Inches: For dogs over 22 inches at the withers

Owners are responsible for entering their dog in the proper height division.

### **Obstacles**

Obstacles shall meet the specifications for obstacles in the current edition of the Regulations for Agility Trials.

Handlers entered in all classes are permitted to walk the course without a dog prior to the start of the class; The walk-through is restricted to handlers entered in that class. A warm-up area, consisting of a regulation agility jump, shall be provided for all exhibitors.

## Notice To Exhibitors

- Telegraph, telephone, and fax entries cannot be accepted. Entries not on official AKC entry forms or entry forms without Agreement and Rules on the reverse side of the Official AKC Entry Form are NOT ACCEPTABLE. Unsigned Entry Forms cannot be accepted or entries which specify any conditions as to its acceptance.
- The safety of the dogs is our primary concern. By entering this trial, exhibitors acknowledge that they are familiar with the rules and regulations of this sport, and that their dogs are familiar with and able to perform all obstacles safely.
- NORTHWEST ARKANSAS AGILITY GROUP does not agree to arbitrate claims as set forth in the AKC official entry form for this event.
- Entering a Mixture of Regular and Preferred Classes Within the Same Trial Weekend – Multiple Jump Heights Within the Same Trial Day. Effective January 1, 2020, exhibitors may enter a mixture of both Regular and Preferred classes on the same trial day and/or during a trial weekend. Any mixture of Regular and Preferred classes is allowed. Please note that if a dog qualifies in Regular Master Standard and Preferred Master JWW (or vice versa) on the same trial day, then NO Double Q shall be earned toward either the MACH or PACH title. The Double Q still requires that Standard Agility and Jumpers With Weaves be either both Regular OR both Preferred on the same trial day.
- Additionally, within the same Regular or Preferred classes, a dog may now be entered in multiple jump heights within the same trial day. For example, the same dog may now be entered in 20-inch Master STD/JWW while also entered in 24C-inch Premier STD/JWW on the same trial day.
- **A separate entry form must be submitted when the same dog is being entered in a mixture of Regular and Preferred and/or different jump heights within the same trial weekend** thereby clearly indicating which class(es) and/or jump heights belong together for each trial day of the weekend.

### Entering For Exhibition Only (FEO)

As of January 1, 2020, For Exhibition Only may be offered at the option of the host club. FEO will be offered on a one-year pilot basis in order to give AKC time to evaluate its impact. FEO will allow exhibitors to work with their dogs in a trial environment. FEO is only allowed in the Time 2 Beat and FAST classes. FEO will be of value to new exhibitors or exhibitors that are having difficulty with a specific obstacle and/or ring environment. Competitors must enter in T2B and/or FAST. Participation in FEO is non-qualifying.

- FEO runs are treated as trial entries. The exhibitor must enter the class(es) (T2B and/or FAST) prior to the closing date, pay class entry fee(s) and the Trial Secretary must record the entry in the Trial Catalog as part of the results for that class. FEO does not need to be noted on the entry form; the handler will declare the day of the show.
- Dogs may be entered in any jump height for FEO runs. If entered in an ineligible jump height, the team is committed to FEO for that run and must declare FEO on the start line. Day of show jump height changes are not allowed.
- Dogs may be entered in any level of FAST (Novice, Open, Excellent, Master). If the dog is not eligible for the level entered, the team is committed to FEO for that run and must declare FEO on the start line. Day of show level changes are not allowed.
- The exhibitor must declare FEO in the ring prior to leading out. FEO may be declared earlier (ex. when checking in at the gate board).
- Toys are allowed in the ring
  - Toys must be non-audible
  - Toys may not leave the handler's hand
  - Toys that roll freely cannot be used
- Food/treats are not allowed in the ring
- FEO should be utilized for the benefit of the dog and not as a punitive correction. Harsh verbal and /or physical corrections shall not be tolerated. Any determination of harshness by the judge shall be immediately whistled and the handler will be dismissed from the ring.
- A judge must monitor the entire run. Judges can stop a run at any time

## Fix and Go On (FNG)

As of January 1, 2020, Fix and Go On will be offered on a one-year pilot basis in order to give AKC time to evaluate its impact. FNG allows exhibitors to immediately reattempt an obstacle at any time while on course when the dog's performance of an obstacle is not to their expectation. This allows the dog to successfully complete the obstacle then finish the course or leave the ring on a positive note. Using FNG will result in a non-qualifying score.

- NORTHWEST ARKANSAS AGILITY GROUP and its agents, etc. assume no responsibility for any loss, damage or injury sustained by exhibitors, handlers or any of their dogs or property and further assumes no responsibility for injury to children.
- NORTHWEST ARKANSAS AGILITY GROUP and its agents, etc. reserve the right to decline entries for cause and may remove any dog on account of aggression. No one shall have any recourse or claim against NWAAG.
- Unentered dogs shall not be on the trial grounds and will be asked to leave.
- Entry fee will not be refunded in the event that the dog is absent, disqualified, excused, or barred from competition by action of the Trial Committee. No entry fee will be returned if the trial cannot open or be completed by reason of civil disturbance, fire, an act of God, public emergency, act of a public enemy, or any other cause beyond the control of the organizing committee.
- Returned checks do not constitute a valid entry. A \$20.00 service fee will be added for all returned checks.
- No refund for duplicate entries. Care will be taken to find duplicates; however, if an entry has been processed **No Refund** will be made.
- Owners are responsible for errors in making out entry forms, whoever may make such errors, and no entry fee will be refunded in the event of such errors or cancellation of entries after published closing date. **PLEASE PRINT OR TYPE CLEARLY.**
- All dogs present must be on leash or confined to crates or ex-pens when not being judged, except when in the designated warm-up area.
- **NO CRATING IN THE FIRST TWO ROWS OF ALL BLEACHERS AND WHERE INDICATED NO CRATING.**
- **MACH and PACH** parties will not be allowed at this trial.
- It is expressly understood that the exhibitors alone are responsible for the behavior of their dogs and/or children. Any exhibitor whose dogs and/or children create unnecessary disturbances or repeatedly engage in unsafe or disruptive behavior may, at the discretion of the Trial Committee, be asked to leave the trial site. In such a case, no refund of any entry fees will be made.
- The club will provide **full refunds less processing fees** for bitches in season, injured or sick dogs. A request for refund and written verification from a veterinarian must be submitted to the Trial Secretary no later than one half hour prior to the start of the first class of the trial. Refunds will be mailed after trial.
- Exhibitors may choose to enter their dog in a higher height division than required by AKC, but not a division lower than their AKC mandated height.
- **Exhibitors may not enter the building until the designated time given with final confirmation or they are subject to being excused from the trial and no refund given.**
- Exhibitors are responsible for being at the ring gate when it is their turn to run. Judge need not wait for any dog holding up a class. NORTHWEST ARKANSAS AGILITY GROUP and the Trial Secretary have no obligation or responsibility for providing service through a public address system or stewards for the purposes of calling or locating dogs that are not brought into the ring when required.
- This trial will be run under the revised Regulations for Agility Trials that became effective as of January 1, 2020.
- **Exhibitors are responsible for cleaning up after their dog(s).** Any exhibitor failing to do so may be excused without benefit of refund if the Event Committee deems the exhibitor to be in violation of this requirement. Cleaning supplies and disposal sites will be available at various locations around the show grounds

- Crates may be left in the area designated for agility for the duration of the trial. NORTHWEST ARKANSAS AGILITY GROUP and the University of Arkansas assumes no responsibility for anything lost or stolen. No dogs may be left at the trial site overnight.
- The trial will be held indoors on 2 90x 90 packed dirt surfaces. Exhibitors are responsible for picking up after their own dogs. Failure to do so could result in being excused from the trial.
- Exhibitors should follow their veterinarians' recommendations to assure their dogs are free of internal and external parasites, any communicable diseases, and have appropriate vaccinations.

### **Dogs Eligible To Enter**

This trial is open to all dogs over the age of 15 months that are registered with the American Kennel Club or are registerable breeds that have obtained an AKC PAL/ILP number. Dogs should be physically sound. Dogs that are blind shall not be eligible, and neither are bitches in season, aggressive dogs, or dogs suffering from any deformity, injury, or illness which may affect the dog's physical or mental performance. No dog shall compete if it is taped or bandaged in any way or has anything attached to it for medical purposes. Refer to Chapter 2 of the Registration and Discipline Rules for the listing of registerable breeds that may participate. Puppies under 4 months of age are strictly prohibited from the trial grounds.

Owners are responsible for entering their dogs in the proper height division. Exhibitors may choose to enter their dog in a higher height division than required by AKC, but not a height division lower than the AKC mandated height. Judge reserves the right to measure dogs entered at the Trial. You may enter different heights in the same day but must send a separate entry for each different height within the same trial.



## INFORMATION FOR EXHIBITORS REGARDING COVID-19 AND PARTICIPATION IN NWAAG TRIALS

By entering or attending this trial you understand that there is you are consenting that you understand there is an inherent risk of exposure to COVID-19. COVID-19 exists in any public place where people are present. COVID-19 is an extremely contagious disease that can lead to severe illness and in some cases death. By entering/attending this trial, you voluntarily assume all risks related to exposure to COVID-19 and agree that NWAAG, the AKC, and the University of Arkansas are not liable for any exposure/risk associated with COVID-19.

Due to the COVID-19 pandemic, the following rules will be in place during our trial. These rules will be in effect from Thursday setup and continue through the tear down on Sunday. While we are doing the best we can to make this event as safe as possible, there may still be risk of infection/exposure that we don't know about or cannot control. If you are concerned about the possibility of exposure to the Coronavirus OR if you are unwilling to follow the stated rules, then please do not enter our trial.

- **MASK**-Mask must be worn while in the building at all times except for when running your dog or while eating/drinking. You may take your mask off as you go into the ring and then will need to put it back on as you leave the ring. Mask must be worn covering your nose and mouth. Face shields will not be allowed without a mask due to local city ordinance requiring mask covering mouth and nose. Please note this trial is being held in a state with a current face covering ordinance and a city mask ordinance; that requires face coverings to be worn at all times when in building along with anytime social distancing isn't possible. **YOU ARE RESPONSIBLE TO PROVIDE YOUR OWN MASK.**
- **RUNNING ORDER**-The running order for this trial could change at any time to help with limitations of numbers allowed in the building at a time. We will do our best to inform you before closing of the trial.
- **CRATING**- Crating from your car is strongly encouraged and the east and west gravel parking areas will be designated for those crating from their car only. Configure your crating area so you are 6 ft from others not within your individual group. A group is defined as no more than 10 persons including members of the same household and those persons who traveled to together to the

event or facility. If a member of the trial committee asks you to move your crating, please do so immediately. We plan to use the lobby for crating along with a classroom. Mats must be used in lobby and classrooms. Crating is allowed in the stands for trial committee workers only.

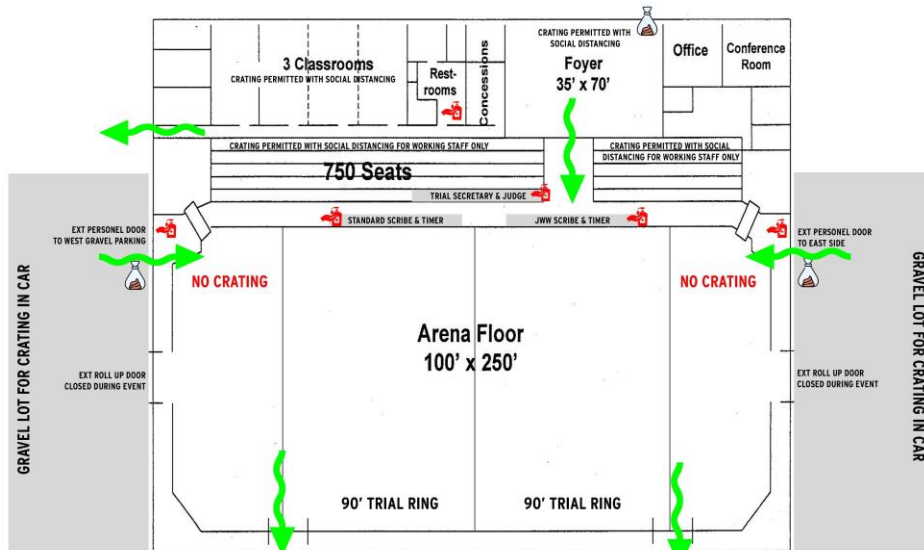
- **SPECTATORS**- There will be no spectators allowed at this trial. This means that only Exhibitors will be allowed in the building. Due to limited space we are asking that non-entered dogs not attend this trial.
- **LEASH** -We will have a leash runner or the Exhibitor may run with their leash in their pocket or clipped around their waist.
- **FOOD**- There will not be any food or drinks available at this trial so please plan accordingly.
- **MACH/PACH PARTIES**- MACH/PACH parties along with any celebratory events will not be allowed at this trial. This means there will not be communal tables of any kind.
- **COURSE MAPS**- Course Maps will be emailed out any time after 6pm the night before each trial day. Running Orders and final results will be posted.
- **MEASURING OF DOGS**- There will be no measuring of dogs at this trial.
- **TRAFFIC FLOW**- There will be designated entrances and exits along with ways to walk around the arena. The traffic flows will be clearly marked and must be followed at all times.
- **RIBBONS**- We plan on having three tables set up. One for Master/Ex/Premier; one for Open and one for Nov. T2B and FAST stickers will be placed on the Nov Table. Stickers and a variety of ribbons will also be on each table. Ribbons and stickers will still be on a "self serve" basis, but there will be "Xs" on the floor to indicate 6ft spacing. Again PLEASE be respectful of social distancing.
- **Changes to rules** - We may make changes to these rules prior to the start of the trial. BE SURE to read your confirmation letter to see what changes have been instated. Again, we realize these are changes to activities and habits we have had for a long time. In order to hold this trial, these are the compromises we must make, based on information from the CDC and following consultation with the AKC. Please be aware that infractions of these rules will be

dealt with according to AKC regulations, up to and including requiring you to leave the trial site and bench committee hearings.

- Please wash your hands frequently and use hand sanitizer when unable to wash hands.

**EXHIBITORS ARE ADVISED THAT BY ENTERING THIS TRIAL YOU AGREE TO ADHERE TO THE ABOVE POLICIES.**

**IF AFTER READING THESE RULES YOU DO NOT WISH TO COMPLY WITH THEM WE ASK THAT YOU PLEASE DO NOT ENTER THIS TRIAL. FAILURE TO COMPLY WILL RESULT IN YOU BEING ASKED TO LEAVE THE TRIAL AND NO REFUND WILL BE GIVEN AND POSSIBLE DENIAL OF FUTURE ENTRIES AT AN NWAAG TRIAL.**



**AGILITY TRIAL - MOVE UP FORM  
USE THIS ENTRY FORM TO MOVE UP TO A  
HIGHER AGILITY CLASS ONLY**

From Chapter 1, Section 20: dogs may be moved up to a higher class at the request of the owner as a result of qualifying for an agility title, provided that the request is made to the Trial Secretary no later than the day preceding the event. Such move up entries shall be accepted subject to the availability of the class i.e. that it is offered in the premium list and that the entry limit, if any, will not be exceeded and the payment of any difference in entry fee. Dogs so moved up will be entered at the end of the running order. Entry move-up valid only if the dog was already entered at the Event indicated below and only if approved by the Trial Secretary

Today's Date: \_\_\_\_\_ Circle Day to Move-Up:  
**FRIDAY SATURDAY SUNDAY**  
 Dog's Call Name: \_\_\_\_\_  
 Breed: \_\_\_\_\_  
 Owner's Name: \_\_\_\_\_  
 Handler's Name (if different): \_\_\_\_\_

Signature of Owner or agent duly authorized to make this entry: \_\_\_\_\_

Signature of Trial Secretary: \_\_\_\_\_

AGILITY CLASS (CIRCLE ONE)	JUMP HEIGHT (CIRCLE ONE)									
	Standard	Open	Excellent	Masters	8	12	16	20	24	24c
Preferred Std	Open P	Excellent P	Masters P	4	8	12	16	20		
JWW	Open	Excellent	Masters	8	12	16	20	24	24c	
Preferred JWW	Open P	Excellent P	Masters P	4	8	12	16	20		
FAST	Open	Excellent	Masters	8	12	16	20	24	24c	
Preferred Fast	Open P	Excellent P	Masters P	4	8	12	16	20		





OFFICIAL AMERICAN KENNEL CLUB AGILITY ENTRY FORM

Northwest Arkansas Agility Group

03/12/21-03/14/21

Opens: 01/26/21 • Closes:02/26/21

Table with 6 columns for dates and classes (STD, JWW, PremSTD, PremJW, FAST, T2B)

Daily Entry Fee: 1st run \$25; \$14 each additional run

Make checks payable to: NWAAG; Mail to: Stephanie Langston, 603 SE Yale, Bentonville,AR 72712

IMPORTANT: Carefully read instructions before filling out! ENTRY FEE ENCLOSED

Choose Either Regular OR Preferred Classes

Circle one jump height | Circle class selections | Only one selection per class (both Master & Premier allowed)

Table comparing Regular and Preferred classes for various jump heights and classes.

Non-Regular Classes International Sweepstakes [ ]STD [ ]JWW

Form for dog measurement: This Dog Needs To Be Measured [ ]Yes [ ]No, BREED, SEX, VARIETY, HEIGHT AT WITHERS, CALL NAME

AKC® NAME (INCLUDE AKC TITLES ONLY)

Registration information: AKC® NO, ILP NO, PAL NO, FOREIGN REG. NO & COUNTRY, BREEDER, DATE OF BIRTH, PLACE OF BIRTH

SIRE

DAM

ACTUAL OWNERS

OWNERS ADDRESS [ ] NEW ADDRESS, CITY, STATE ZIP + 4

HANDLER, ENTER JR. HANDLER # if applicable

Exhibitor or owner MUST sign on the signature line beneath the instructions.

AGREEMENT

I certify that I am the actual owner of the dog, or that I am the duly authorized agent of the actual owner whose name I have entered. In consideration of the acceptance of this entry, I (we) agree to abide by the rules and regulations of The American Kennel Club in effect at the time of this event...

Additionally, I (we) hereby assume the sole responsibility for and agree to indemnify, defend and save the aforementioned parties harmless from any and all loss and expense (including legal fees) by reason of the liability imposed by law upon any of the aforementioned parties for damage because of bodily injuries, including death at any time resulting therefrom...

INSTRUCTIONS

Handlers whose dogs measure into the 8" through 20" regular jump height divisions may opt to enter in a higher or 24-choice height division for all Regular titling classes, but not in a division lower than their proper height division.

All dogs that have not been officially measured for an Agility Jump Height Card may still compete; however, they must be measured by a Judge of record, an Agility Field Representative, or a Volunteer Measuring Official, prior to running.

Dogs listed in the AKC Canine PartnersSM program may be eligible to enter all-breed AKC agility trials at the club's option. These dogs should be listed as All American Dog and must include their AKC number on the entry form and check the AKC No. box.

Junior Handlers should enter their Junior Handler number on the front of this form. Should you not have your Junior Handler number, it may be obtained from the American Kennel Club (919) 233-9767.

SIGNATURE of owner or his agent duly authorized to make this entry.

SIGN HERE X \_\_\_\_\_

Telephone Number: \_\_\_\_\_

Email Address: \_\_\_\_\_ [ ] New Email

In Case of Emergency - Name: \_\_\_\_\_ Phone #: \_\_\_\_\_